

SIMULATION
SOLUTIONS



WWW.LEOCANCERCARE.COM

THE MISSING PIECE OF THE UPRIGHT PARADIGM

Early treatments, dating back to the 1940s, were administered with patients in an upright position, reflecting the natural state of the body. This approach was logical. However, the late diagnosis of many patients, often leaving them too ill to stand, posed significant challenges.

Today, medical centers worldwide are returning to the more natural position and incorporating upright treatments into their clinical practices. A crucial factor in this paradigm has always been imaging – the missing piece. That is, until now.

VERSATILE IMAGING

Publications from world leading centers across the globe have shown the benefits of imaging and treating patients for many conditions in the upright orientation.

The flexibility of our multi-position imaging solutions means you can have the best of both worlds, maximizing the precious real estate in your clinic. Aida is super flexible, with the ability to scan in the upright or recumbent position. See page 6-7.

SOLUTIONS THAT GROW WITH YOU

At Leo Cancer Care, we understand the challenges of integrating new technologies into your department.

That's why we've designed our solutions to deliver a seamless upgrade path that evolves alongside your clinic, empowering you to provide the best care possible for your patients. Read more on page 4-5.



MORE  HUMAN

SIMULATION SOLUTIONS THAT GROW WITH YOU

1



COMPLETE SIMULATION INSIDE THE TREATMENT ROOM

Enabling you to simulate in the treatment room and treat in the simulation room. Having diagnostic-quality CT at the isocenter means a single treatment room can serve both your needs.

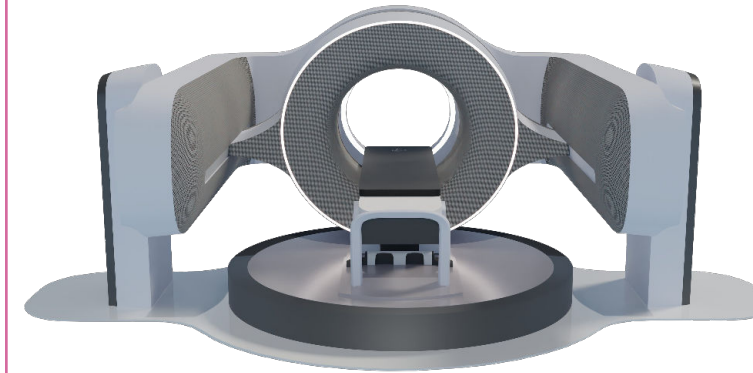
2



CREATE TREATMENT DEVICES OUTSIDE OF THE TREATMENT ROOM

Having an additional patient positioning system outside of the treatment room, drastically cuts down the time needed for CT planning, giving you more time back in the treatment room.

3



VERSATILE IMAGING

A diagnostic-quality CT scanner which can be placed over an existing static patient positioning system, as seen in step 2. Aida is super flexible, with the ability to scan in the upright or recumbent position. See pages 6-7.

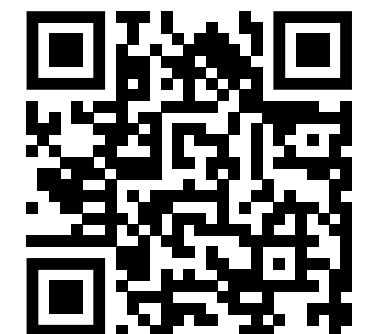
MONITORING MOTION:

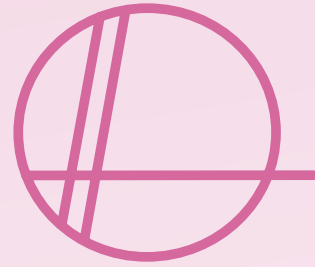


Our optical guidance solution supports reproducible patient positioning and monitors motion during treatment.

SCAN QR CODE TO WATCH THE EXPLAINER VIDEO HERE

Please note that Aida and our Optical Guidance solution are not yet commercially available.





MEET AIDA™

Named after Florence Ada Stoney, the first female radiologist in the United Kingdom who served as the Head of the x-ray department in makeshift hospitals throughout World War I.

Our versatile multi-axis computed tomography scanner and patient positioning system allow for imaging in the seated, perched, standing and recumbent positions.

FEATURES AND BENEFITS

WHAT MAKES AIDA SO FLEXIBLE



VERSATILE MULTI-AXIS IMAGING

The flexibility of our multi-position imaging solutions means you can have the best of both upright and supine positioning, maximising the precious real estate in your clinic.



DESIGNED WITH THE PATIENT IN MIND

The product itself has been designed with patient experience at the forefront, feeling open, with curved edges and fabric textures making the system more comfortable and less daunting for patients.



IMAGING THAT GROWS WITH YOU

As upright treatments increase in your department, so will the need for imaging, Aida can be installed over our patient positioning system, allowing you to implement new technology when you need it most.



PATIENT AND CLINICIAN EXPERIENCE

Positioning a patient eye-to-eye with the team treating them allows both patient and therapist to read each others body language to interpret subtle distress or pain cues. It is also allows a connection to be made which is the foundation for a trusting relationship in a time when patients feel vulnerable.

PRODUCT SPECIFICATIONS

CT SCANNER

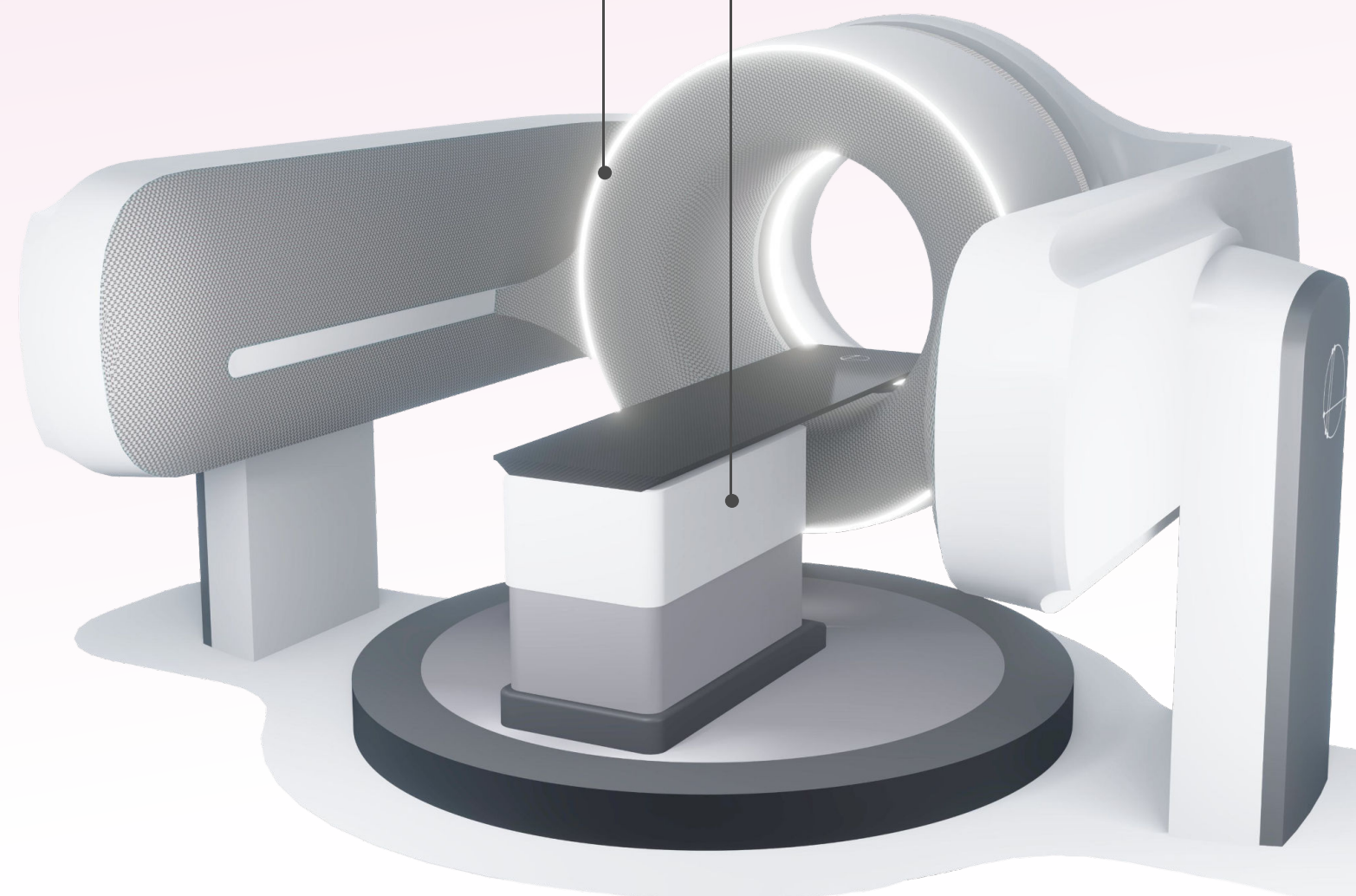
Bore Size: 84cm
Field of View: 62.3cm
Imaging Energies: 80kV & 140kV
Gantry Tilt Angle: +15 to -90 Degrees
Travel Range: 160cm
Slice Thickness: 1, 2, 3, 4 mm
Number of rows: 32

UPRIGHT PATIENT POSITIONING SYSTEM

Positioning Angles: +15 to -90 Degrees
Maximum Patient Mass: 150 kg

CT SCANNER

DYNAMIC PATIENT POSITIONING SYSTEM



Please note that Aida is not yet commercially available.



LEO

CANCER CARE

// I've been interested in upright treatments for quite a while now, probably eight or nine years and became convinced through that work that it is not just an alternative way to treat patients but it's a better way to treat patients. //

Laurence E. Court Ph.D



// The idea of vertical positioning is likely the way forward in terms of cost-effectiveness and workflow efficiencies. //

Tony Lomax Ph.D

UK OFFICE

Unit 2 Arrow Point
Manor Royal, Crawley
RH10 9BT, UK



US OFFICE

7921 UW Health Court
Middleton,
WI 53562 USA

WWW.LEOCANCERCARE.COM

Scan the QR code to visit our website.